

SPRING



“โรงแรมตั้งในเมือง Trapper Creek ประตูทางเข้าสู่ Denali State Park
จุดชมวิวยอดเขา Denali และแสงเหนือที่สวยงามที่สุดใน Alaska”

Employer Status: Pre-Placement

Company: (Spring) Holland America Princess Mt. McKinley Princess Wilderness Lodge
[www.princesslodges.com/princess-alaska-lodges/mckinley-lodge/
Denali State Park and Preserve, Alaska](http://www.princesslodges.com/princess-alaska-lodges/mckinley-lodge/Denali-State-Park-and-Preserve,Alaska)

Address: [Mile Post 133 N George Parks Hwy, Denali State Park, Trapper Creek, Alaska,
99683](http://Mile-Post-133-N-George-Parks-Hwy-Denali-State-Park-Trapper-Creek-Alaska-99683)

Type of Job: National Park / Hotel & Resort

Position: Room Attendant

- Clean and sanitize guest rooms, bathrooms, and public areas to company standards.
- Make beds, vacuum, dust, clean bathrooms, and restock towels, amenities, and room supplies.
- Remove rubbish, handle linens, and maintain a clean and organized work area.
- Inspect rooms for maintenance issues, make minor repairs when possible, and report concerns to the Housekeeping Manager.
- Ensure rooms are ready for guest occupancy and provide guest assistance when needed.
- Follow company policies, safety standards, and environmental practices.
- Report unusual guest conduct and perform additional duties as assigned.

Dish Steward

- Clean, wash, and store food service items, kitchen equipment, and work areas.
- Maintain clean, sanitized, and organized kitchen and dining areas throughout each shift.
- Assist with setting up, monitoring, and cleaning dining room and buffet areas as needed.
- Support cooks and chefs with food preparation and daily kitchen operations.
- Follow food safety, sanitation, and machine cleaning procedures.
- Maintain a safe, clean, and organized work environment.
- Work in assigned kitchen or dining areas and assist with training new employees when needed.
- Perform additional duties as assigned.

Hourly Wage: \$16.00 (All positions)

Work Dates:	Start Date	End Date
	20 - 29 April 2027	26 June – 7 July 2027

Minimum work duration: See work dates.

English Level: 4 – 10 (Room Attendant / Dish Steward)

- Benefits:**
- FREE! Uniform
 - Trips to Talkeetna, Wasilla & ANC, and employee tour opportunities.
 - Denali National Park offers endless opportunities for wildlife viewing, hiking, camping, fishing, and national park education programs. You can even volunteer to walk the Denali National Park Service sled dogs!
 - There is hiking, camping, fishing, and rafting to do in the area near and around the lodge.
 - Shopping Trips / Potlucks or Dinners / Movie or Game Nights / Company Parties / Trips to Nearby/Major Attractions / Holiday Events

Housing: \$105 per week (includes 3 meals a day)

- Housing style: Suite style, every two rooms will share a bathroom.
- Ping pong & foosball tables, movie room, book library, scheduled
- activities,
- Up to 3 students sharing a room
- ✓ Free laundry facilities (including detergent) / Free Linens/Bedding (sheets, blankets, pillows, towels) / Wi-Fi
- ✓ Meals are served in the Employee Dining Room at the Lodge
- ⊘ No kitchen facilities

Housing address: Mile Post 133 George Parks Highway, Trapper Creek, Alaska 99683

Housing Deposit: None

Transportation to Worksite: Walking distance
Work site is .25 miles/400 meters from housing. Walk is uphill one way.

Public Transportation: N/A

Interesting Places / Attractions:

- **Walking Distance from Worksite and Housing:** Restaurants, Fitness Center, Internet Cafe
- **In Town, Requires Transportation:** Food Market, Shopping Mall, Post Office, Bank, Restaurants, Public Library
- Denali National Park / Aurora / Mount Foraker / Ruth Glacier / Wonder Lake / Canyon Wave / Black Diamond ATV Tours / Denali Park Zipline / Denali Natural History Tour / Mt. Healy Overlook Trail

Requirement

- Lifting requirement: 50lbs/22kgs

Room Attendant

Must perform physical activities that require moving one's whole body, such as lifting, balancing, climbing, bending, and climbing stairs. Required to stand or walk for long periods of time. Required lift, push, pull, or carry objects on a repeated basis. Must be able to work continuously in an indoor, humid or hot environment without air-conditioning. May be required to work outdoors

with exposure to a variety of weather - rain, cold, direct sunlight, high heat and humidity.

Dishwasher

Must be able to lift 12 kgs. and able to complete physical work.

All positions require:

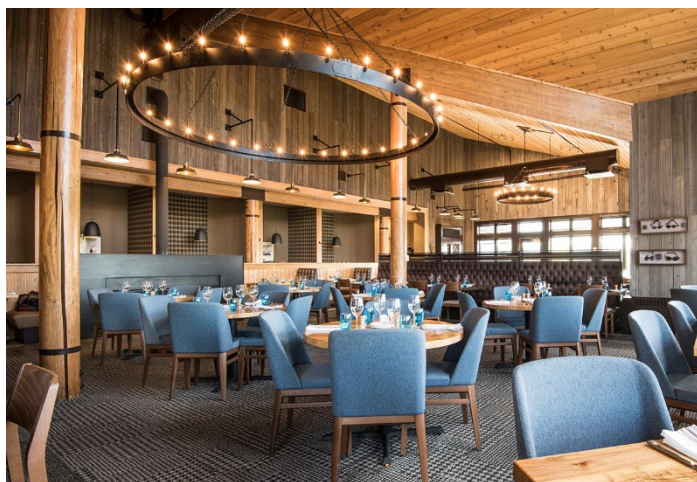
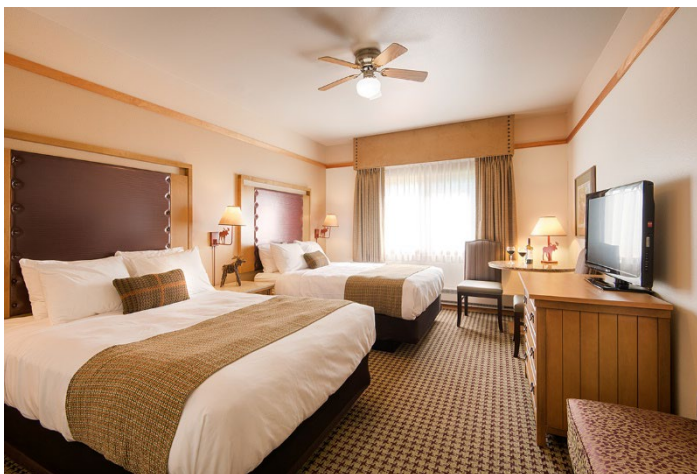
- Handling cleaning chemicals.
- Standing and walking for entire shift.
- No facial hair for employees in food & beverage positions. Men's hair must be shorter than collar length. Must practice good hygiene and deodorant is requested. No extreme hairstyles or colors, only one piercing allowed in each ear and you may be asked to cover tattoos.
- Must apply for Social Security Number and open bank account before start date.

Other

- **Overtime:** Yes, paid after 40 hours.
- **Second Job Availability:** Yes, likely

(Spring) HAP Mt. McKinley Princess Wilderness Lodge

Denali National Park and Preserve, Alaska



หมายเหตุ ข้อมูลในเอกสารทั้งหมดนี้เป็นข้อมูลเบื้องต้นของสถานที่ทำงาน อาจมีการเปลี่ยนแปลงขึ้นอยู่กับองค์กรแลกเปลี่ยน และ สถานที่ทำงาน ทางบริษัทฯ ขอสงวนสิทธิ์ในการเปลี่ยนแปลงข้อมูล โดยไม่ต้องแจ้งให้ทราบล่วงหน้า

(Spring) HAP Mt. McKinley Princess Wilderness Lodge

Denali National Park and Preserve, Alaska



(Spring) HAP Mt. McKinley Princess Wilderness Lodge

Denali National Park and Preserve, Alaska



หมายเหตุ ข้อมูลในเอกสารทั้งหมดนี้เป็นข้อมูลเบื้องต้นของสถานที่ทำงาน อาจมีการเปลี่ยนแปลงขึ้นอยู่กับองค์กรแลกเปลี่ยน และ สถานที่ทำงาน ทางบริษัท ขอสงวนสิทธิ์ในการเปลี่ยนแปลงข้อมูลโดยไม่ต้องแจ้งให้ทราบล่วงหน้า