



“ซูเปอร์มาร์เก็ตเครื่องใหญ่ หางานสองได้

โอกาสการพัฒนาภาษาอังกฤษสูง”

**Company:** Safeway Steamboat Springs  
[Steamboat Springs, Colorado](#)  
[www.safeway.com](http://www.safeway.com)

**Address:** [37500 E US Hwy 40, Steamboat Springs, CO 80487](#)

**Type of Job:** Supermarket

**Position:** **General Clerk (Female ONLY):** Students will be assigned to a department after the 2-weeks training period. Department include but are not limited to

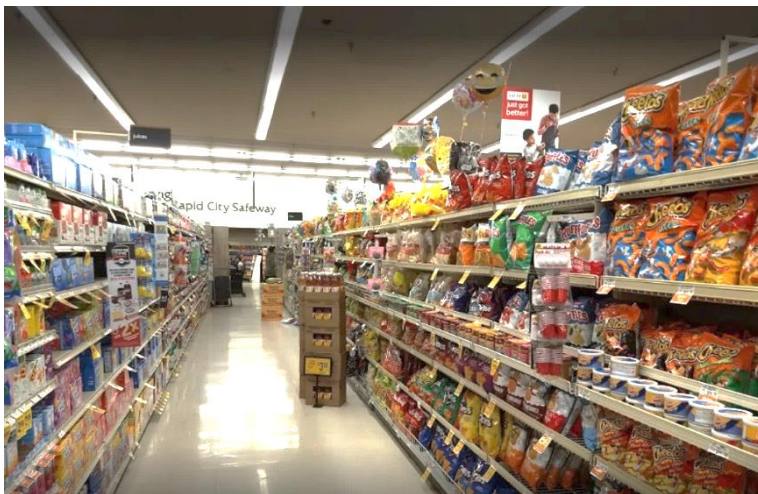
- **Deli/Meat** – Recommending, preparing, slicing, weighing, packaging, and pricing meats and cheeses. Preparing special orders and party trays according to seasonal menu.
- **Bakery** – Preparing and decorating bakery product.
- **Check out** – Collect payments and bag purchases for customers and maintain accurate cash drawer.
- **Stocker** – Ensuring that shelves, displays, storage, and aisles are properly stocked.
- **Starbucks** (inside the store) – Make and serve beverages, such as coffee and tea, and foods. Operate a cash register, coffee brewing equipment, and interact with a high-volume of customers. Cleaning and sanitizing food preparation areas, tools, and equipment
- **Courtesy Clerk** – Bagging groceries, handling damaged or returned products, assisting customers carry groceries, retrieving shopping carts in the parking lot. Often, perform cleanup duties in the aisles, bathrooms, and sometimes assist the cleanup of other departments

<b>Hourly Wage:</b>	\$13.50	
<b>Work Dates:</b>	<b>Start Date</b>	<b>End Date</b>
	15 May - 5 June 2022	15 August – 7 September 2022
	<b>Minimum work duration:</b> See work dates	
<b>English Level:</b>	Lv.8 - 10	
<b>Benefits:</b>	<ul style="list-style-type: none"> <li>● BONUS \$150 bonus, at the employer's discretion, if participants stay through their original program end dates and have good work performance.</li> </ul>	
<b>Housing:</b>	<p>\$125 per week</p> <p>Employer will provide housing in hotel rooms located near the store.</p> <ul style="list-style-type: none"> <li>✓ Each room will have two queen beds, a bathroom, and a microwave and mini-fridge available for use. Bed linens will be provided, and utilities and Wi-Fi costs are included in rent.</li> <li>✓ Hotel is located 1.5 miles from the store.</li> </ul>	
<b>Transportation to Worksite:</b>	Walking Distance / Bicycle	
<b>Public Transportation :</b>	Bus / Taxi	
<b>Interesting Places / Attractions:</b>	Fish Creek Falls / Amaze'n Steamboat Family Fun Park / <a href="#">Winter Park</a> / <a href="#">Rocky Mountain</a> / <a href="#">Arapaho National Forest</a>	
<b>Requirement</b>	<ul style="list-style-type: none"> <li>● Drug test will be required on arrival.</li> <li>● Students must be physically healthy enough to work for extended periods while standing, walking, bending, lifting, crouching, reaching, and kneeling.</li> <li>● Students must be willing to work evenings, weekends, and holidays. Also working in the outdoor while pushing shopping carts and be comfortable using common cleaning products.</li> <li>● Long periods of standing and students should be hardworking, work well on a team, and have a positive attitude.</li> </ul>	

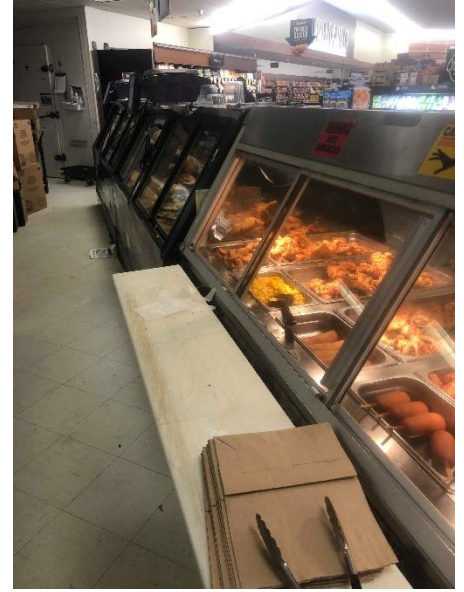
- Some departments require associate to be in freezer for up to 1 hour, gloves/jackets/hats are permitted to be worn in the freezers.
- All participants must join the union and pay the union dues and membership fee, which are payroll deducted. The dues range from \$8-\$12 per week and the membership fee is deducted from your paychecks in small increments (up to \$250) over the course of employment.

**Other**

- **Overtime:** 1.5 times wage after 40 hours per week. Overtime hours might not be available.



หมายเหตุ ข้อมูลในเอกสารทั้งหมดนี้เป็นข้อมูลเบื้องต้นของสถานที่ทำงาน อาจมีการเปลี่ยนแปลงขึ้นอยู่กับองค์กรแลกเปลี่ยนฯ และ สถานที่ทำงาน ทางบริษัทฯ ขอสงวนสิทธิ์ในการเปลี่ยนแปลงข้อมูล โดยไม่ต้องแจ้งให้ทราบล่วงหน้า



[Back to Employer List](#)

หมายเหตุ ข้อมูลในเอกสารทั้งหมดนี้เป็นข้อมูลเบื้องต้นของสถานที่ทำงาน อาจมีการเปลี่ยนแปลงขึ้นอยู่กับองค์กรแลกเปลี่ยนฯ และ สถานที่ทำงาน ทางบริษัทฯ ขอสงวนสิทธิ์ในการเปลี่ยนแปลงข้อมูล โดยไม่ต้องแจ้งให้ทราบล่วงหน้า