



South Lake Powell

“แหล่งท่องเที่ยวทางธรรมชาติ บนทะเลสาบโพลเวล

จุดหมายปลายทางการท่องเที่ยวชั้นนำของโลก

ที่พำนักทุก กิจกรรมเพียบ”

Employer Status: **Confirmed-Placement**

Company Aramark South Lake Powell

: [Page, Arizona](#)

www.lakepowell.com

Address: [100 Lakeshore Drive, PO Box 1597, Page, Arizona, 86040](#)

Type of National Park

Job:

Position: ● **Cleaning Services Worker - Boat Rentals**

The Cleaning Service Worker primarily works as a Boat Cleaner. Cleaning Service Workers are flexible, willing to help out wherever needed, comfortable working outside in extreme heat conditions, and committed to achieving the highest cleanliness standards to ensure customer satisfaction.

● **Housekeeper**

Housekeepers are responsible for cleaning assigned lodge rooms, linens, hallways, carpets and other designated amenities and areas in accordance with the highest cleanliness standards to ensure customer satisfaction. Housekeepers may also collect sort, wash, dry and fold linen from various departments.

● **Utility Worker**

The General Utility Worker cleans and maintains assigned area(s) to meet customer and client satisfaction. Adheres to established procedures to provide a safe working environment including complying with OSHA, state/local, federal, and Aramark regulations, Maintains a clean and orderly environment to protect the safety and health of others, Properly cleans and maintains housekeeping equipment, Cleans assigned areas to Aramark and client standards and requirements, Follows procedures for storage and disposal of trash and transports it to designated areas, Reports maintenance concerns via work order requests to appropriate personnel, Secures the facility, ensuring the building is locked/unlocked as required, Ensures security of company assets.

- **Marina Services Worker / Dockhand (Executive Services)**

The Dockhand is responsible for ensuring guest satisfaction at the marina location by assisting boat crew with vehicle navigation, assisting guests with boat operations, properly maintaining the dock area(s), and providing general customer service. Cleans and maintains docks, restrooms, and public areas to ensure the safety and satisfaction of guests and marina staff, Ensure customers understand boating safety and assist customers with docking boats, Fuels, cleans and maintains boats, Greet customers and assist with inquiries or concerns while anticipating the customers' needs, Maintains excellent customer service and a positive attitude towards guests, customers, clients, co-workers, etc. Moderate to heavy cleaning activities to maintain the space will be required. some cleaning activities may involve bending, squatting, and/or the use of chemicals

- **Marina Services Worker / Dockhand - Fuel Dock (Executive Services)**

The Dockhand is responsible for ensuring guest satisfaction at the marina location by assisting boat crew with vehicle navigation, assisting guests with boat operations, properly maintaining the dock area(s), and providing general customer service. Cleans and maintains docks, restrooms, and public areas to ensure the safety and satisfaction of guests and marina staff. Ensure customers understand boating safety and assist customers with docking boats. Fuels, cleans and maintains boats. Greet customers and assist with inquiries or concerns while anticipating the customers' needs. Maintains excellent customer service and a positive attitude towards guests, customers, clients, co-workers, etc. Moderate to heavy cleaning activities to maintain the space will be required. some cleaning activities may involve bending, squatting, and/or the use of chemicals.

- **Marina Services/Fuel Dock- Boat Rentals**



Fuel Dock /Marina Service Workers primarily work as Fuel Attendants – assisting guests with the purchase of gas, oil and accessories. Service Workers are flexible, willing to help out wherever needed, comfortable working outside in extreme heat conditions and committed to delivering the highest levels of customer service. Service Workers also provide a concierge service to guests - always highly knowledgeable on Lake Powell Resorts and Marinas and the surrounding area. Performing daily safety tasks; fueling boats; checking engine oil; cleaning the fuel dock, barges and other relevant areas (including restrooms); rolling fuel hoses; changing filters; washing decks; and emptying trash. Will handle cash, credit cards and traveler's checks. Must be proficient in counting money, providing change and make accurate deposits at the end of shift.

Hourly Wage: \$17.20

Work Dates:	Position	Start Date	End Date
	● Cleaning Services Worker - Boat Rentals	7 – 15 May 2025	27 August – 7 September 2025
	● Housekeeper	15 – 29 May 2025	6 August – 7 September 2025
	● Utility Worker	7 May – 5 June 2025	20 August – 7 September 2025
	● Marina Services/Dockhand (Executive Services)	8 May – 26 June 2025	9 July – 7 September 2025
	● Marina Services/Dockhand-Fuel Dock (Executive Services)	8 – 15 May 2025	6 August – 7 September 2025
	● Marina Services/Fuel Dock- Boat Rentals	7 – 15 May 2025	27 August – 7 September 2025

***Start date Thursday ONLY** Shuttle provides Monday and Tuesday only

English Level: 4 – 10 (Cleaning Services Worker - Boat Rentals / Housekeeper / Utility Worker)
6 – 10 (Marina Services/Dockhand (Executive Services) / Marina Services/Dockhand-Fuel Dock (Executive Services) / Marina Services/Fuel Dock- Boat Rentals))

Benefits:

- End of season bonus is \$150. WAT students must complete fully their contract and agreed upon work dates to be eligible for the bonus.
- Discounts on food, retail, and boat rentals.



- Not only can you water-ski, wakeboard, go tubing, sky diving, rent boats, camp, and explore the canyons and parks of the Grand Circle your entire summer, you can do so at a cost that won't hurt your piggy bank.
- Cultural Opportunities: Students can visit National Parks, attend movie nights, game nights, wildlife tours, shopping trips and sports tournaments! There is an annual event where employees compete in fun games, win prizes, and enjoy free food and music!
- Employees receive houseboat and powerboat rental incentives, free kayaks, boat tours, and access to beaches. Located just a few hours from national parks, you can explore someplace new each weekend.

Housing: \$35 per week
 Meal Plan: estimated of 13\$ per day (Optional)

- 2 person/room, dormitory-style
- Each room contains bunk beds, private shower and toilet, dressers, an air conditioner, and closet space.
- WiFi internet is not available in the dorm rooms. It is only accessible in the Recreation Center or other public areas such as the resort lodge.

Housing deposit: \$150 (refundable)
Housing address: [PO BOX 4690 Page, AZ 86040](#)

Transportation to Worksite: Walking distance / Employer-Provided Transportation is free of charge

Public Transportation: None

Interesting Places: Horseshoe bend / Hole in the rock / Bryce Canyon National Park / Zion National Park / Salt Lake City / Monument Valley / **Walking Distance from Worksite**
 Restaurants, Fitness Center

/

Attractions:

Requirements:

Requirement

- Must be able to work physically hard, be able to deal with constant bending, frequent lifting and carrying of up to 50 lbs./22 kgs.
- Must be able to work with chemicals.
- Students must bring comfortable nonskid closed-toe shoes.
- Dress in the appropriate clean and pressed uniform and present a clean and neat appearance. Hair must be clean, combed and well groomed, no extreme styles or colors. No dreadlocks.
- Clean shaven appearance is required unless a beard has previously been grown. Beard length may not exceed 5cm.
- Jewelry must be conservative, in good taste, appropriate to working attire and not conflict with job related safety standards. Visible body piercing is unacceptable, except for earing.
- Please be aware this area experiences EXTREME HEAT and summer conditions. This includes temperatures up to 110 degrees Fahrenheit (43 degree Celsius).

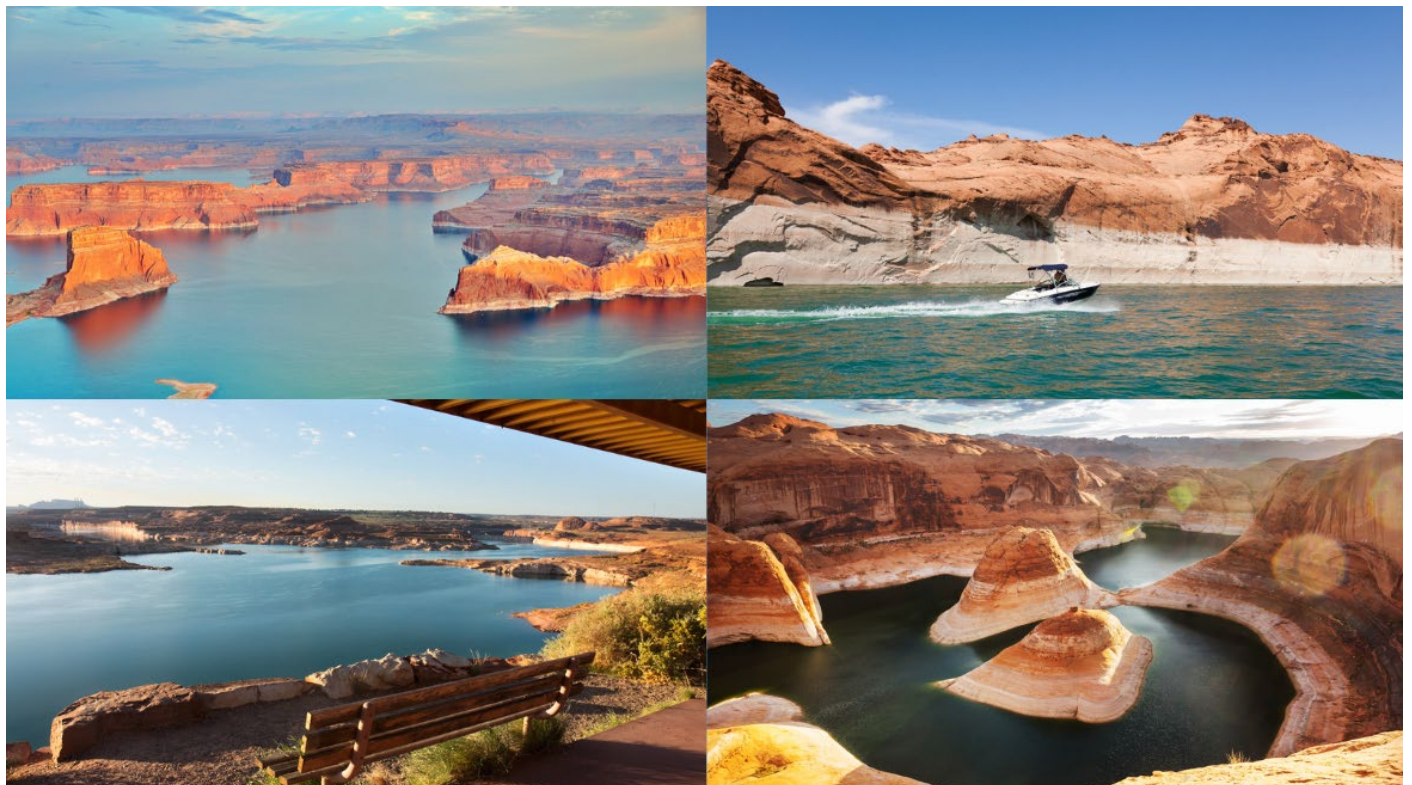
Other

- **Overtime:** Paid after 40 hours
- **Second Job availability:** Yes, likely



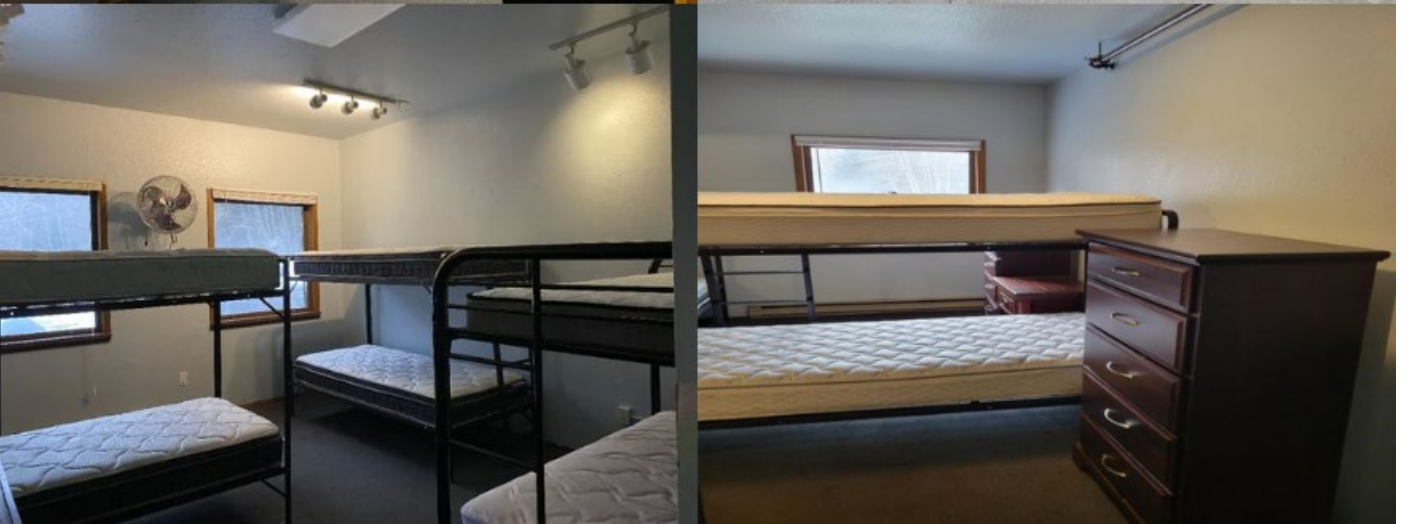
หมายเหตุ ข้อมูลในเอกสารทั้งหมดนี้เป็นข้อมูลเบื้องต้นของสถานที่ทำงาน อาจมีการเปลี่ยนแปลงขึ้นอยู่กับองค์กรแลกเปลี่ยน และ สถานที่ทำงาน ทางบริษัท ขอสงวนสิทธิ์ในการเปลี่ยนแปลงข้อมูลโดยไม่ต้องแจ้งให้ทราบล่วงหน้า







หมายเหตุ ข้อมูลในเอกสารทั้งหมดนี้เป็นข้อมูลเบื้องต้นของสถานที่ทำงาน อาจมีการเปลี่ยนแปลงขึ้นอยู่กับองค์กรแลกเปลี่ยนฯ และ สถานที่ทำงาน ทางบริษัทฯ ขอสงวนสิทธิ์ในการเปลี่ยนแปลงข้อมูล โดยไม่ต้องแจ้งให้ทราบล่วงหน้า



หมายเหตุ ข้อมูลในเอกสารทั้งหมดนี้เป็นข้อมูลเบื้องต้นของสถานที่ทำงาน อาจมีการเปลี่ยนแปลงขึ้นอยู่กับองค์กรแลกเปลี่ยนฯ และ สถานที่ทำงาน ทางบริษัทฯ ขอสงวนสิทธิ์ในการเปลี่ยนแปลงข้อมูล โดยไม่ต้องแจ้งให้ทราบล่วงหน้า