



“Supermarketชื่อดังที่มีสาขามากกว่า 375 สาขา

ในเมืองตัตทะเล บรยากาศสุดชิล”

Employer Status: **Confirmed-Placement**

Company: Stop and Shop Supermarket

Growing from a single corner grocer to a chain of more than 375 stores throughout New England Stop & Shop has offered its customers the best selection, quality and value for more than 100 years.

[Mashpee, Massachusetts](#)

<http://www.stopandshop.com>

Address: [10 Bates Road Mashpee , Massachusetts , 02649](#)

Type of Job: Supermarket

Position:

- **Grocery Store Clerk**

Grocery Clerks may work in several jobs at the grocery store. Job areas may include: cashier, deli, produce, bakery, meat, seafood, stocking shelves, cleaning, parking lot control.

- Completing sales transactions, entering sales in cash register, taking money, counting out correct change, packing items in bags for customers.
- Greeting customers and providing excellent customer service
- Stocking shelves and inventory of items

- Using powered equipment such as Deli Slicers, Bakeshop ovens and Trash Compactors
- Maintaining cleaning in all areas including stockrooms, coolers, freezers, floors and checkout areas
- Collecting shopping carts from parking lot and bringing them to the store front
- Communication with supervisors and managers regarding customer concerns, accidents and potential safety hazards
- Participate in training and attend orientation classes
- Perform all duties in a safe manor and follow all company policies
- Employees may be asked to move to different departments around the store or take on different job assignments as needed
- Some heavy lifting may be required as well as some handling cash
- Some positions require standing for long periods of time

Hourly Wage: \$18.00

Work Dates:

Start Date	End Date
1 – 16 June 2024	7 September 2024

Minimum work duration: 10 weeks
Suggested arrival time: 8 a.m. – 6 p.m.

English Level: 6 – 10

Benefits:

- After 30 days of employment a 5% discount is provided to all employees.
- Company Parties, Potlucks or Dinners, Trips to Nearby/Major Attractions, and more are organized to provide information about events, local resources, attractions/sites, the local community, and opportunities for all employees to participate in company-paid social events. These events also offer employees the potential to win awards, incentives, and raffle prizes.

Housing: \$ 150 per week

Stop & Shop will provide information to participants on host family housing and other available housing options upon being accepted into CIEE program. Most families have pets. We ensure they are friendly when we conduct site visits. Rooms are not co-ed. Only same sex are placed in the same room. We do our best to keep friends together however it may not always be possible. Our current host families have at least two beds per room. A student traveling alone will be paired with another student traveling alone.

- **Housing Deposit:** \$125 Please come prepared with enough money for 3 weeks approx. \$750-\$1000.

Transportation to Worksite: Bicycles

Public Transportation: Bus / Taxi / Ferries

Interesting Places Nantucket Island / Martha's Vineyard / John F Kennedy Hyannis Museum / Veteran's Park Veteran's / Cahoon Museum of American Art

/ Attractions: **Walking Distance from Worksite and Housing:**

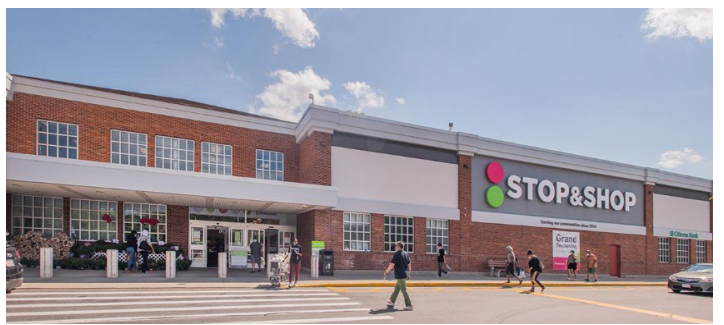
Food Market, Bank, Restaurants, Internet Cafe

In Town, Requires Transportation:

Shopping Mall, Post Office, Fitness Center, Public Library

- Requirement**
- Lifting requirement: 50lbs/22kgs
 - Standing for entire shift
 - Handling cleaning chemicals
 - Students hired on or after Memorial Day (5/27/2024) will have dues and initiation fees of \$20.60 deducted weekly after 90 days of employment.

- Other**
- **Overtime** is paid after 40 hours.



Stop and Shop Supermarket

Mashpee, Massachusetts

